



# XCELL AMNIO MATRIX™

## XCELL AMNIO MATRIX™

Lyophilized Amniotic  
Membrane

## Advanced Wound Care Made Simple

*You'll see the difference.*

One look and it is obvious that XCell Amnio Matrix is different. XCell Amnio Matrix is opaque and thicker than other grafts. The dry graft is flexible and easy to handle. What you can't see is the benefit of our proprietary processing focused on preserving the quality of the matrix. The growth factor-rich matrix with an outer basement membrane immediately serves as a natural barrier and supports re-epithelialization.

Ideal wound covering options for your challenging cases.

- *Natural barrier protects from the environment*
- *Simple to apply-flexible graft with no rehydration needed*
- *Physiologic reservoir of growth factors and cytokines*

- 1 Better Preserved Matrix
- 2 Optimal Growth Factor Preservation
- 3 Convenient Room Temperature Storage

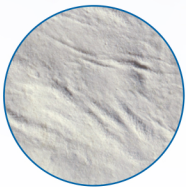


**PRECISE**  
BIOSCIENCE™

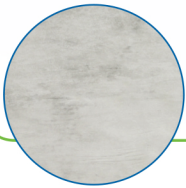
# XCELL AMNIO MATRIX™

Lyophilized Amniotic  
Membrane

Next generation allograft that offers  
easy-to-use wound care solutions



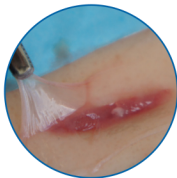
- Natural physiological barrier for various applications



- Optimal preservation of endogenous growth factors



**Chronic non-healing**  
Supports wound closure of  
chronic diabetic foot ulcers,  
venous leg ulcers and  
pressure wounds



**Surgical**  
Enables rapid, non-pathologic  
healing and remodeling of  
surgical and reconstructive  
wounds



## XCell Amnio Matrix Ordering Information

Size	Product ID
2 x 2 cm	XAM-0202
2 x 4 cm	XAM-0204
4 x 4 cm	XAM-0404
4 x 7 cm	XAM-0407



Precise Bioscience  
7630 Plaza Court  
Willowbrook, IL 60527

1. Data on file.

Results from laboratory testing or animal studies may not be predictive of clinical experience. Physicians and operating room personnel should review the Package Insert for product information, including indications, contraindications, precautions and warnings.